



Metropolitan's headquarters building in downtown Los Angeles.

**THE METROPOLITAN WATER DISTRICT
OF SOUTHERN CALIFORNIA**

ANNUAL REPORT FOR THE FISCAL YEAR

July 1, 2008 to June 30, 2009



LOS ANGELES, CALIFORNIA
2009

CONTENTS

<i>Chapter</i>	<i>Page</i>
List of Abbreviations	ix
About Metropolitan	xiii
Composition of the Metropolitan Water District of Southern California.....	xv
Directors	xvi
Board of Directors	xx
Board Committees	xxii
Historical Roll of Directors.....	xxiv
Organization Chart	xxxvi
Staff	xxxvii
Introduction	1
1. Delivering Metropolitan’s Water Supplies	5
Major Accomplishments for Fiscal Year 2008/09	8
State Water Project	8
Colorado River	8
System Operations and Planning	8
2. Water Resource Management	21
State Water Project Resources	21
Bay-Delta Program	21
Water Transfers and Exchanges.....	22
Semitropic/Metropolitan Water Banking and Exchange Program	22
Arvin-Edison Water Management Program.....	25
San Bernardino/Metropolitan Coordinated Operating Agreement.....	25
Kern Delta/Metropolitan Water Management Program	25
Mojave/Metropolitan Demonstration Water Exchange Program	26
Colorado River Resources	26
Water Supply Acquisitions, Storage, and Exchanges	27
Local Resources.....	31
Water Recycling, Groundwater Recovery, and Seawater Desalination	31
Groundwater Storage	32
Conservation and Water-Use Efficiency.....	32
Water Resource and System Planning	34
Resource Analysis	34
Water Resource Data	35
3. Water System Operations	41
Water Treatment	41
Water Quality	43
Legislation and Regulations.....	43
Water Quality Monitoring.....	43
Compliance.....	43
Chemical/Physical	43
Total Dissolved Solids	44
Disinfection Byproducts	50
Microbiological.....	51

CONTENTS

<i>Chapter</i>	<i>Page</i>
System Management and Pathogen Monitoring	59
Algae Control Program	59
Quagga Mussel Control Program.....	59
Pathogen Monitoring Program.....	59
Watershed, Water Protection and Supply	68
Watershed and Source Water Protection.....	68
Pump-in Programs and Water Banking.....	68
Water Quality Modeling and Forecasting	68
Uranium Mill Tailings	69
Topock Chromium VI Remediation Project	69
Perchlorate	69
Pharmaceuticals and Personal Care Products (PPCPs)	70
N-Nitrosodimethylamine (NDMA).....	70
Technology Assessment	70
Treatment Process Optimization and Development.....	70
Desalination Research and Innovation Partnership (DRIP)	71
Funded Projects	71
Service to Member Agencies and Drinking Water Industry	71
Conveyance, Distribution and Support	73
Conveyance and Distribution.....	73
Operations Support Services.....	75
Security and Emergency Management	76
Energy Management.....	77
Hydroelectric Power Recovery Plant Operations.....	77
Colorado River Aqueduct Power	78
Small-Conduit Hydropower Contracts.....	83
Future Hoover Dam Power Contract	83
National Electric Reliability Standards.....	83
Market Redesign and Technology Upgrade.....	84
Strategic Power Plan.....	84
Apprenticeship Program	84
Fleet Services.....	85
Environmental, Health and Safety	85
Safety	85
Training	86
4. Corporate Resources	89
Capital Investment Plan	90
Engineering Services	91
Inland Feeder	102
Oxidation Retrofit Program	102
Perris Valley Pipeline	103
Rehabilitation and Replacement	103
Energy Management	104
Infrastructure Protection	105
Information Technology	106
Cybersecurity	106

CONTENTS

<i>Chapter</i>	<i>Page</i>
Metropolitan's Information Technology Strategic Plan.....	107
Headquarters Technology Project.....	107
Automatic Meter Reading Upgrade.....	107
Water Information System.....	107
Service Consolidation Project.....	108
E-Discovery Software and Hardware.....	108
Business Services.....	108
Metropolitan's Second Annual Spring Green Fair.....	108
Cumulus 7 Image Archiving Application.....	108
Reprographic Production Equipment.....	109
Business Process Sustainability.....	109
5. Legal.....	111
Major Events.....	111
State Water Project.....	111
Colorado River.....	112
Water Quality.....	113
Water Supply.....	113
Capital Projects.....	114
Energy.....	115
Human Resources.....	115
Finance.....	116
Other Activities.....	117
6. Finance.....	119
Chief Financial Officer.....	119
FY 2008/09 Major Financial Activities and Accomplishments.....	120
Security Sales/Debt Administration.....	120
Treasury Operations.....	121
Accounting Operations.....	121
Budget and Financial Planning.....	122
Business Continuity.....	122
Financial Information.....	123
Revenues.....	123
Expenses.....	127
Debt Financing.....	128
Budget Process.....	128
Treasury Operations and Cash Management.....	129
7. Administrative.....	137
Real Property Development and Management.....	137
Property Management.....	137
Highlights for Fiscal Year 2008/09.....	137
Right-of-Way and Planning.....	138
Accomplishments for Fiscal Year 2008/09.....	138
Diamond Valley Lake.....	138
Recreation.....	138
Visitor Center.....	139

CONTENTS

<i>Chapter</i>	<i>Page</i>
Headquarters Facility Services	139
Fiscal Year 2008/09 Highlights	139
Office of the Board of Directors	140
Highlights for Fiscal Year 2008/09.....	140
Access DC	140
Chairman’s Bike Ride at Diamond Valley Lake.....	140
General Administration.....	140
Inspection Trip Program	141
Human Resources.....	142
Highlights for Fiscal Year 2008/09.....	143
High Performance Workplace.....	143
Management Excellence	143
Talent Management	143
Workplace Planning/Succession	143
Equal Employment Opportunity	144
Classification/Compensation	144
Recruitment and Selection	144
Training and Workforce Development	144
Human Resources Excellence.....	145
Human Resources Organization.....	145
Employee and Labor Relations	146
Benefits and Human Resources Information Systems (HRIS).....	146
Risk Management	147
Workers’ Compensation and Medical.....	147
Business Outreach	148
Highlights for Fiscal Year 2008/09.....	148
8. External Affairs	151
Legislative Services.....	151
Conservation, Community and Customer Services	153
Conservation and California Friendly Programs.....	153
Community Programs	154
Customer Service.....	155
Educational Programs	155
Media Services	156
Press Office	156
Publications	158
Web Services.....	158
9. Internal Audit	161
Major Accomplishments.....	162
Quality Assurance Activities	164
10. Ethics	167
Enforcement	168
Education	168
Enhancement	168
Index	170

CONTENTS

Number		Page
TABLES		
1-1	Metropolitan's Distribution System Water Treatment Plants	5
1-2	Monthly Water Sales for All Member Agencies.....	9
1-3	Historical Water Sales	11
1-4	Water Use by Metropolitan's Member Agencies.....	12
1-5	2008/09 Major Shutdowns & Service Interruptions.....	14
2-1	Charges, Payments & Credits under the State Water and Devil Canyon Castaic Contracts	24
2-2	Metropolitan's Conjunctive Use Programs.....	33
3-1	Sample Locations for Organic Compounds	44
3-2	Trace Metals in Metropolitan Water Supplies	45
3-3	Radiological Compliance Monitoring.....	46
3-4	General Mineral and Physical Analysis of Metropolitan's Water Supplies	47
3-5	Total Trihalomethanes (TTHMs) & Haloacetic Acids (HAA5) in Plant Effluent.....	50
3-6	Raw Water <i>E. Coli</i> Results LT2 Enhanced Surface Water Treatment Rule Compliance	52
3-7	Raw Water <i>E. Coli</i> Results California Title 22 Compliance.....	53
3-8	Copper Sulfate Treatments to Control Taste and Odor Events in MWD Lakes	60
3-9	Distribution System N-Nitrosodimethylamine (NDMA) Levels (ng/L)	67
3-10	Active Water Quality Grants	72
3-11	Congressionally-Mandated Grant Awarded to Metropolitan	73
3-12	Hydroelectric Power Recovery Plants Production for the Past Two Fiscal Years	79
3-13	Metropolitan's CRA Electric Energy Use.....	80
3-14	Energy Cost for Pumping Colorado River Water	80
3-15	Metropolitan's Historical CRA Electric Energy Use, Kilowatt Hours.....	81
3-16	Accident Incidents	87
4-1	Projects Completed as of June 30, 2009 (Unaudited)	93
4-2	Major Construction Contracts in Progress as of June 30, 2009 (Unaudited)	94
4-3	Major Engineering Projects in Design	96
6-1	Water Sales Rate Structure-Current.....	125
6-2	Receipts by Source	126
6-3	Cash Expenditures	128
6-4	Summary of Changes in Net Assets.....	131

CONTENTS

Number		Page
--------	--	------

TABLES

6-5	Ten Member Agencies with Largest Assessed Valuations	132
6-6	Ten-Year Summary of Assessed Valuations and Property Tax Rates	132
6-7	Ten-Year Summary of Property Tax Levies and Collections	133
6-8	Ten-Year Summary of Net Operating Income and Revenue Bond Debt Service Coverage	134
6-9	Ten Largest Water Customers	135

FIGURES

1-1	Total Water Sales for Fiscal Year 2008/09 – All Member Agencies	10
1-2	Monthly Water Sales for Fiscal Year 2008/09 – All Member Agencies.....	17
1-3	Comparison of Water Sales to Member Agencies for the Past Two Fiscal Years	18
2-1	Total Deliveries through State Water Project to MWD	23
2-2	Colorado River Basin	28
2-3	Colorado River Supply	29
2-4	Historical Lake Mead & Lake Powell Storage	30
2-5	Recycled Water Production	31
2-6	Recovered Groundwater Production.....	31
2-7	Precipitation.....	36
2-8	Population Growth.....	37
2-9	Metropolitan’s Actual and Projected Water Sales	38
3-1	Total Dissolved Solids in East & West Branch SWP and CRA (Lake Havasu)	48
3-2	Yearly Average TDS in Plant Effluent, FY 2008/09	49
3-3	Trihalomethane for All Plants Quarterly and Running Annual Averages.....	54
3-4	Haloacetic Acids – Distribution Systemwide Quarterly and Running Annual Averages	55
3-5	Quarterly TOC and Bromide at Treatment Plant Influent, 2002-2009.....	56
3-6	Bromate Levels in Treatment Plant Effluent, 2003-2009	58
3-7	Samples Analyzed for MIB and Geosmin in Source and Finished Waters	61
3-8	Taste and Odor Events (>10 ng/L) in Source Water Reservoirs Caused by MIB-Producing Cyanobacteria, FY 2008/09	62

CONTENTS

Number **Page**

FIGURES

3-9	Taste and Odor Events (>10 ng/L) in Source Water Reservoirs Caused by Geosmin-Producing Cyanobacteria, FY 2008/09	63
3-10	Copper Sulfate Usage Between 1982 and 2009 in Reservoirs	64
3-11	Perchlorate Loading in Las Vegas Wash	65
3-12	Perchlorate Levels at Whitsett Intake at Lake Havasu	66
3-13	CRA Energy Mix 1987 to 2009	82
4-1	Capital Expenditures	92

LIST OF ABBREVIATIONS

<i>Abbreviation</i>	<i>Term</i>
AB	Assembly Bill
AF	Acre-feet or acre-foot
BDCP	Bay Delta Conservation Plan
CalPERS	California Public Employees Retirement System
CDPH	California Department of Public Health
CESA	California Endangered Species Act
CFO	Chief Financial Officer
CIP	Capital Investment Plan
CPP	Community Partnering Program
CRA	Colorado River Aqueduct
CVP	Central Valley Project
CVWD	Coachella Valley Water District
CY	Calendar year
DART	Days Away, Restrictions and Transfers
D/DBP	Disinfectants/Disinfection Byproducts
DOE	U.S. Department of Energy
DRIP	Desalination Research and Innovation Partnership
DVL	Diamond Valley Lake
DWR	Department of Water Resources
EHS	Environmental, Health and Safety
EIR	Environmental Impact Report
EOC	Emergency Operations Center
ESA	Endangered Species Act
FY	Fiscal year
HAA5	Five haloacetic acids
IID	Imperial Irrigation District
IRP	Integrated Water Resources Plan
LEED	Leadership in Energy and Environmental Design
LRP	Local Resources Program
MAF	Million acre-feet
MIB	Methylisoborneol

LIST OF ABBREVIATIONS

<i>Abbreviation</i>	<i>Term</i>
NDMA	N-Nitrosodimethylamine
O&M	Operations & Maintenance
ORP	Oxidation Retrofit Program
OSHA	Occupational Safety and Health Administration
PERB	Public Employment Relations Board
PPCP	Pharmaceuticals and Personal Care Products
QSA	Quantification Settlement Agreement
RAA	Running Annual Average
RO	Reverse osmosis
SB	Senate Bill
SCADA	Supervisory Control and Data Acquisition System
SWC	State Water Contractors
SWP	State Water Project
SWRCB	State Water Resources Control Board
T&O	Taste and odor
TDS	Total dissolved solids
TOC	Total organic carbon
TTHM	Total trihalomethane
USEPA	U.S. Environmental Protection Agency
WINS	Water Information System
WRM	Water Resource Management
WSO	Water System Operations



Metropolitan's F.E. Weymouth Water Treatment Plant in La Verne.



Chairman Timothy F. Brick presides over Executive Committee meeting of the Metropolitan Board of Directors.

About Metropolitan

The Metropolitan Water District of Southern California is a regional wholesaler that delivers water to 26 member public agencies serving 19 million people living in Los Angeles, Orange, Riverside, San Bernardino, San Diego and Ventura counties.

Metropolitan is governed by a 37-member board of directors representing the 26 member agencies consisting of 14 cities, 11 municipal water districts and one county water authority, which collectively serve the residents and businesses of more than 300 cities and numerous unincorporated communities.

Metropolitan directors are selected by their respective member agencies and may serve on the board of that particular member agency. It is a diverse group drawn from a variety of sectors, including business, government, academia, engineering and agriculture. The board operates under a weighted voting system, with voting share determined by assessed property valuation.

The mission of Metropolitan is to provide its 5,200-square-mile service area with adequate and reliable supplies of high-quality water to meet present and future needs in an environmentally and economically responsible way.

The district imports water from the Colorado River and Northern California to supplement local supplies, and helps its member agencies develop increased water conservation, recycling, storage and other local resource programs.

Metropolitan was established in 1928 under an act of the state Legislature to construct and operate the 242-mile Colorado River Aqueduct, which runs from an intake at Lake Havasu on the California-Arizona border, to an endpoint at Metropolitan's Lake Mathews reservoir in Riverside County.

When Metropolitan began delivering water, its service area consisted of approximately 625 square miles. Its service area has increased by 4,575 square miles since that time. The expansion is primarily the result of annexation of the service areas of member agencies.

In 1960, Metropolitan, along with 30 other public agencies signed a long-term contract that made possible the construction of the State Water Project's 444-mile California Aqueduct, which currently serves urban and agricultural agencies from the San Francisco Bay Area to Southern California. As the largest of the now-29 contractors, Metropolitan contracts with the state Department of Water Resources, which operates the SWP, for slightly less than half of all State Water Project supplies.

Water supplies from the State Water Project travel to Southern California via the California Aqueduct. Metropolitan also has ground-water banking partnerships and water transfer arrangements that secure additional supplies, and provides financial incentives to its member agencies for local investments in water management projects and programs. An increasing percentage of Southern California's water supply comes from these local resources, including: conservation, water recycling and recovered groundwater.

Metropolitan's Board of Directors typically meets on the second Tuesday of each month. Board committee meetings usually occur on the second Monday and the second and fourth Tuesday of the month. Board and committee meetings are open to the public and are broadcast on the Internet through Metropolitan's Web site, www.mwdh2o.com. A schedule of board and committee meetings is available on the Web.

THE METROPOLITAN WATER DISTRICT OF SOUTHERN CALIFORNIA

MUNICIPAL WATER DISTRICTS

Calleguas Central Basin Eastern Foothill Inland Empire Las Virgenes	Orange County Three Valleys Upper San Gabriel Valley West Basin Western of Riverside County
--	---

Anaheim Beverly Hills Burbank Compton Fullerton	MEMBER CITIES Glendale Long Beach Los Angeles Pasadena San Fernando	San Marino Santa Ana Santa Monica Torrance
---	---	---

SAN DIEGO COUNTY WATER AUTHORITY

Calleguas MWD
 Berylwood Heights Mutual Water
 Brandeis Mutual
 Butler Ranch
 California American Water Company
 California Water Service Company
 Camarillo
 Camrosa Water District
 Crestview Mutual Water Company
 Golden State Water Company
 Lake Sherwood Community Services District
 Oak Park Water Service
 Oxnard
 Pleasant Valley Mutual Water Company
 Simi Valley
 Solano Verde Mutual Water Company
 Thousand Oaks
 Ventura Co. Water Works Dist. (Nos. 1 and 19)
 Zone Mutual Water Company

Central Basin MWD
 Bell Gardens
 Bellflower-Somerset Mutual Water Co.
 California Water Service Company
 Cerritos
 Commerce
 Downey
 Golden State Water Company
 Huntington Park
 La Habra Heights County Water District
 Lakewood
 L.A. County Rancho Los Amigos
 Lynwood
 Maywood Mutual Water Co. Nos. 1, 2 and 3
 Montebello
 Norwalk
 Orchard Dale Water District
 Paramount

Park Water Company
 San Gabriel Valley Water Company
 Santa Fe Springs
 Signal Hill
 South Gate
 Suburban Water Systems
 Vernon
 Walnut Park Mutual Water Company
 Water Replenishment District of So. Cal.

Eastern MWD
 Hemet
 Lake Hemet Municipal Water District
 Nuevo Water Company
 Perris
 Rancho California Water District
 San Jacinto

Foothill MWD
 Crescenta Valley Water District
 La Canada Irrigation District
 Las Flores Water Company
 Lincoln Avenue Water Company
 Mesa Crest Water Company
 Rubio Canon Land & Water Assoc.
 Valley Water Company

Inland Empire Utilities Agency
 Chino
 Chino Hills
 Cucamonga Valley Water District
 Fontana Water Company
 Monte Vista Water District
 Ontario
 San Antonio Water Company
 Upland
 Water Facilities Authority

MWD of Orange County
 Brea
 Buena Park
 East Orange County Water District
 El Toro Water District
 Emerald Bay Service District
 Fountain Valley
 Garden Grove
 Golden State Water Company
 Huntington Beach
 Irvine Ranch Water District
 La Habra
 La Palma
 Laguna Beach County Water Dist.
 Mesa Consolidated Water District
 Moulton Niguel Water District
 Newport Beach
 Orange

Orange County Water District
 San Clemente
 San Juan Capistrano
 Santa Margarita Water District
 Seal Beach
 Serrano Water District
 South Coast Water District
 Trabuco Canyon Water District
 Tustin
 Westminster
 Yorba Linda Water District

San Diego County Water Authority
 Carlsbad Municipal Water District
 Del Mar
 Escondido
 Fallbrook Public Utility District
 Helix Water District
 Lakeside Water District
 National City

Oceanside
 Olivenhain Municipal Water District
 Otay Water District
 Padre Dam Municipal Water District
 Camp Pendleton Marine Corps Base
 Poway
 Rainbow Municipal Water District
 Ramona Municipal Water District
 Rincon del Diablo Municipal Water District
 San Diego
 San Dieguito Water District
 Santa Fe Irrigation District
 Sweetwater Authority
 Vallecitos Water District
 Valley Center Municipal Water District
 Vista Irrigation District
 Yuima Municipal Water District

Three Valleys MWD
 Boy Scouts of America, Firestone Ranch Reserv.
 Cal Poly Pomona
 Covina
 Covina Irrigating Company
 Glendora
 Golden State Water Co. (San Dimas & Claremont)
 La Verne
 Lanterman Development Center
 Mt. San Antonio College
 Pomona
 Rowland Water District
 Suburban Water Systems
 Valencia Heights Water Company
 Walnut Valley Water District

Upper San Gabriel Valley MWD
 Arcadia
 Azusa
 Monrovia

Main San Gabriel Basin Watermaster/Alhambra
 Golden State Water Company
 South Pasadena
 Suburban Water Systems
 Valley County Water District

West Basin MWD
 California American Water Co. (L.A. Division)
 California Water Service Company
 Golden State Water Company
 El Segundo
 Inglewood
 Lomita
 Los Angeles County Waterworks District #29
 Manhattan Beach
 Water Replenishment Dist. of Southern California

Western MWD of Riverside County
 Box Springs Mutual Water Company
 Corona
 Eagle Valley Mutual Water Company
 Elsinore Valley MWD
 Lee Lake Water District
 Norco
 Rancho California Water District
 Riverside

Contracting Agencies
 Alhambra
 Arvin Edison
 Azusa
 Chiriaco Summit Water District
 Coachella Valley Water District
 Desert Water Agency
 Monterey Park
 San Gabriel Basin Water Quality Authority
 San Gabriel Valley Municipal Water District
 Sierra Madre
 Western Water Company

Figure 1. Composition of The Metropolitan Water District of Southern California

DIRECTORS
JUNE 30, 2009



Chairman
Timothy F. Brick
Pasadena



Vice Chair
Marcie L. Edwards
Anaheim



Vice Chair
John W. Murray Jr.
Los Angeles



Vice Chair
Fern Steiner
*San Diego County
Water Authority*



Secretary
Judy Abdo
Santa Monica

DIRECTORS
JUNE 30, 2009



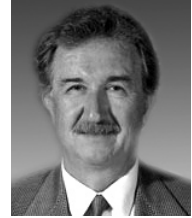
Linda Ackerman
*Municipal Water
District of
Orange County*



Robert Apodaca
*Central Basin
Municipal
Water District*



Yvonne Arceneaux
Compton



Ergun Bakall
*Municipal Water
District of
Orange County*



Sylvia Ballin
San Fernando



James M. Barrett
*San Diego County
Water Authority*



James H. Blake
Fullerton



Glenn A. Brown
Burbank



David D. De Jesus
*Three Valleys
Municipal Water
District*



Larry D. Dick
*Municipal Water
District of
Orange County*



James T. Edwards
*Foothill Municipal
Water District*



David W. Fleming
Los Angeles

DIRECTORS
JUNE 30, 2009



John V. Foley
*Municipal Water
District of
Orange County*



Ted Grandsen
*Calleguas Municipal
Water District*



Gloria Gray
*West Basin Municipal
Water District*



Daniel E. Grisett
Santa Ana



Aaron A. Grunfeld
Los Angeles



Phillip D. Hawkins
*Central Basin
Municipal Water
District*



Peter Kavounas
Glendale



Keith Lewinger
*San Diego County
Water Authority*



Edward C. Little
*West Basin Municipal
Water District*



S. R. "Al" Lopez
*Western Municipal
Water District of
Riverside County*



Suja Lowenthal
Long Beach



John T. Morris
San Marino

DIRECTORS
JUNE 30, 2009



Glen D Peterson
*Las Virgenes
Municipal Water
District*



W. D. "Bud" Pocklington
*San Diego County
Water Authority*



Jesús E. Quiñonez
Los Angeles



Randy A. Record
*Eastern Municipal
Water District*



R. William "Bill"
Robinson
*Upper San Gabriel
Valley Municipal Water
District*



Angel Santiago
*Inland Empire Utilities
Agency*



Bill D. Wright
Torrance



Robert Wunderlich
Beverly Hills

BOARD OF DIRECTORS
July 1, 2008 to June 30, 2009

OFFICERS OF THE BOARD

Chairman.....	Timothy F. Brick
Vice Chair.....	Marcie L. Edwards
Vice Chair.....	Anthony R. Fellow
Vice Chair.....	John W. Murray Jr.
Vice Chair.....	Joseph Parker
Vice Chair.....	Fern Steiner
Secretary	Judy Abdo

MEMBERS OF THE BOARD

Anaheim.....	Marcie L. Edwards
Beverly Hills.....	Robert Wunderlich
Burbank.....	Glenn A. Brown
Calleguas Municipal Water District	Ted Grandsen
Central Basin Municipal Water District	Robert Apodaca
Central Basin Municipal Water District	Phillip D. Hawkins
Compton	Isadore Hall III
Compton	Yvonne Arceneaux
Eastern Municipal Water District.....	Randy A. Record
Foothill Municipal Water District.....	James T. Edwards
Fullerton.....	James H. Blake
Glendale.....	Peter Kavounas
Glendale.....	James M. Rez
Inland Empire Utilities Agency	Gene Koopman
Inland Empire Utilities Agency	Angel Santiago
Long Beach.....	Suja Lowenthal
Las Virgenes Municipal Water District	Glen D. Peterson
Los Angeles	David W. Fleming
Los Angeles	Aaron A. Grunfeld
Los Angeles	John W. Murray Jr.
Los Angeles	Jesús E. Quiñonez
Los Angeles	Nancy Sutley
Municipal Water District of Orange County	Linda Ackerman
Municipal Water District of Orange County	Ergun Bakall

Municipal Water District of Orange County	Larry D. Dick
Municipal Water District of Orange County	John V. Foley
Pasadena	Timothy F. Brick
San Diego County Water Authority.....	James M. Barrett
San Diego County Water Authority.....	James H. “Jim” Bond
San Diego County Water Authority.....	Keith Lewinger
San Diego County Water Authority.....	Joseph Parker
San Diego County Water Authority.....	W.D. “Bud” Pocklington
San Diego County Water Authority.....	Fern Steiner
San Fernando	Sylvia Ballin
San Marino.....	John T. Morris
Santa Ana.....	Daniel E. Griset
Santa Monica	Judy Abdo
Three Valleys Municipal Water District.....	David D. De Jesus
Torrance	Bill D. Wright
Upper San Gabriel Valley	
Municipal Water District	Anthony R. Fellow
Upper San Gabriel Valley	
Municipal Water District	R. William "Bill" Robinson
West Basin Municipal Water District.....	Gloria Gray
West Basin Municipal Water District.....	Edward C. Little
West Basin Municipal Water District.....	Willard H. Murray Jr.
Western Municipal Water District	
of Riverside County	S.R. “Al” Lopez

Note:
This list includes all officers and members who served on the board at any time during the fiscal year.

BOARD OF DIRECTORS
MEMBERS OF STANDING COMMITTEES
June 30, 2009

EXECUTIVE COMMITTEE

Timothy F. Brick, Chair	Ergun Bakall
Marcie L. Edwards, Vice Chair	James M. Barrett
John W. Murray Jr., Vice Chair	Glenn A. Brown
Fern Steiner, Vice Chair	Daniel E. Griset
Judy Abdo, Secretary	Aaron A. Grunfeld
John V. Foley, Ex Officio	Jesús E. Quiñonez

BUSINESS AND FINANCE

Aaron A. Grunfeld, Chair	Edward C. Little
Keith Lewinger, Vice Chair	S.R. "Al" Lopez
Ergun Bakall	Bill Robinson
James H. Blake	Angel Santiago
Phillip D. Hawkins	Robert Wunderlich
Peter Kavounas	

COMMUNICATIONS AND LEGISLATION

Daniel E. Griset, Chair	David W. Fleming
Linda Ackerman, Vice Chair	Gloria Gray
Judy Abdo	Suja Lowenthal
Robert Apodaca	W.D. "Bud" Pocklington
Sylvia Ballin	Randy A. Record
Larry D. Dick	Angel Santiago
Marcie L. Edwards	Fern Steiner

ENGINEERING AND CAPITAL PROGRAMS

Ergun Bakall, Chair	Aaron A. Grunfeld
John T. Morris, Vice Chair	S.R. "Al" Lopez
Yvonne Arceneaux	John W. Murray Jr.
James M. Barrett	Glen D. Peterson
Marcie L. Edwards	Bill D. Wright
John V. Foley	
Ted Grandsen	

LEGAL AND HUMAN RESOURCES

Jesús E. Quiñonez, Chair
Larry D. Dick, Vice Chair
Judy Abdo
Yvonne Arceneaux
Sylvia Ballin
David D. De Jesus

James T. Edwards
John V. Foley
Gloria Gray
John W. Murray Jr.
Bill Robinson
Fern Steiner

WATER QUALITY AND OPERATIONS

Glenn A. Brown, Chair
Suja Lowenthal, Vice Chair
Linda Ackerman
Robert Apodaca
James H. Blake
David D. De Jesus

Ted Grandsen
Peter Kavounas
Edward C. Little
Bud Pocklington
Bill D. Wright
Robert Wunderlich

WATER PLANNING AND STEWARDSHIP

James M. Barrett, Chair
Ergun Bakall
Glenn A. Brown
Larry D. Dick
James T. Edwards
David W. Fleming
Gloria Gray
Daniel E. Griset

Phillip D. Hawkins
Keith Lewinger
Suja Lowenthal
John T. Morris
Glen D. Peterson
Jesús E. Quiñonez
Randy A. Record
Bill D. Wright

Wayne T. McMurrayFebruary 12, 1991 to December 31, 2000
 Donald C. Simpson.....October 7, 1996 to December 9, 1996
 Langdon W. Owen.....December 9, 1996 to January 17, 2001

COMPTON

C. A. DickisonJuly 17, 1931 to January 20, 1933
 William H. FosterJanuary 20, 1933 to June 28, 1935
 Warren W. ButlerJune 28, 1935 to January 24, 1980
 Regina Murph.....March 11, 1980 to March 25, 2003
 Kenneth M. OrdunaApril 8, 2003 to January 14, 2004
 Isadore Hall IIIFebruary 9, 2004 to April 13, 2009
 YVONNE ARCENEUX.....April 13, 2009 to

EASTERN MUNICIPAL WATER DISTRICT

Irwin E. FarrarAugust 31, 1951 to March 1, 1982
 Doyle F. Boen.....March 9, 1982 to October 11, 1994
 Chester C. GilbertOctober 11, 1994 to June 1, 1999
 Clayton A. Record Jr.June 1, 1999 to January 9, 2001
 Marion V. AshleyJanuary 9, 2001 to January 6, 2003
 RANDY A. RECORD.....January 14, 2003 to

FOOTHILL MUNICIPAL WATER DISTRICT

Nelson HaywardFebruary 8, 1955 to July 4, 1959
 Conrad R. FantonNovember 10, 1959 to November 2, 1964
 A. B. SmedleyApril 13, 1965 to August 1, 1990
 Brooks T. MorrisSeptember 11, 1990 to November 27, 1991
 William T. O'NeilJanuary 14, 1992 to May 10, 1999
 JAMES T. EDWARDSMay 10, 1999 to

FULLERTON

Walter Humphreys.....April 10, 1931 to January 19, 1945
 H. H. KohlenbergerJuly 27, 1945 to March 7, 1959
 Hubert C. Ferry.....February 23, 1960 to February 8, 1983
 Norman L. De Vilbiss.....February 8, 1983 to April 12, 1988
 JAMES H. BLAKEAugust 23, 1988 to

GLENDALE

W. Turney Fox March 1, 1929 to November 27, 1931
Samuel G. McClure November 27, 1931 to January 13, 1933
Frank P. Taggart January 13, 1933 to August 31, 1934
Bernard C. Brennan August 31, 1934 to April 23, 1937
Herman Nelson June 4, 1937 to August 27, 1954
Paul L. Burkhard September 28, 1954 to June 10, 1958
Normal C. Hayhurst June 10, 1958 to June 9, 1970
Lauren W. Grayson June 9, 1970 to May 21, 1972
William H. Fell June 13, 1972 to July 13, 1976
C. E. Perkins July 13, 1976 to July 13, 1988
James M. Rez August 23, 1988 to March 9, 2009
PETER KAVOUNAS March 9, 2009 to

INLAND EMPIRE UTILITIES AGENCY (formerly Chino Basin MWD)

A. C. Reynolds February 12, 1952 to March 12, 1963
Ray W. Ferguson March 12, 1963 to December 31, 1980
Carl B. Masingale March 10, 1981 to August 9, 1984
John G. Gilday September 11, 1984 to February 15, 1985
Edward A. Girard March 12, 1985 to May 31, 1990
Anne W. Dunihue September 20, 1988 to February 11, 1992
Bill M. Hill August 21, 1990 to February 9, 1999
Dwight F. French February 11, 1992 to August 18, 1994
Wyatt L. Troxel August 19, 1994 to November 14, 2003
Gene Koopman February 9, 1999 to December 31, 2000
November 14, 2003 to February 10, 2009
ANGEL SANTIAGO February 10, 2009 to

LAS VIRGENES MUNICIPAL WATER DISTRICT

Earle Brookins December 13, 1960 to March 26, 1963
A. Myron McBride March 26, 1963 to May 11, 1965
A. Macneil Stelle June 8, 1965 to October 23, 1967
March 11, 1975 to February 9, 1993
Whitney P. Reeve December 19, 1967 to March 11, 1975
GLEN D. PETERSON February 9, 1993 to

LONG BEACH

Nowland M. Reid	April 10, 1931 to January 27, 1933
W. M. Cook	January 27, 1933 to April 30, 1943
Gus A. Walker	April 30, 1943 to December 31, 1976
Lloyd C. Leedom	May 9, 1947 to June 30, 1979
Samuel C. Rue	October 9, 1979 to March 12, 1985
Ida Frances Lowry	March 12, 1985 to February 9, 1993
Henry J. Meyer	February 9, 1993 to August 19, 1997
Helen Z. Hansen	August 19, 1997 to May 13, 2008
SUJA LOWENTHAL	May 13, 2008 to

LOS ANGELES

John R. Haynes	March 1, 1929 to February 4, 1930
John R. Richards	March 1, 1929 to October 28, 1947
W. P. Whitsett	March 1, 1929 to January 10, 1947
John G. Bullock	November 1, 1929 to September 15, 1933
O. T. Johnson Jr.	November 5, 1929 to August 29, 1930
W. L. Honnold	February 28, 1930 to July 21, 1933
J. Eisner	August 29, 1930 to July 2, 1937
Walter A. Ham	January 20, 1933 to January 4, 1935
D. W. Pontius	January 20, 1933 to September 3, 1955
Perry H. Greer	July 21, 1933 to August 14, 1950
V. H. Rossetti	October 13, 1933 to November 19, 1960
Otto J. Emme	January 11, 1935 to October 22, 1947
Louis S. Nordlinger	August 13, 1937 to June 8, 1940
Joseph Jensen	August 16, 1940 to February 3, 1944 March 8, 1946 to July 8, 1974
Ransom W. Chase	March 14, 1947 to February 11, 1975
Gordon B. Crary	March 14, 1947 to November 8, 1959
Howard D. Mills	March 14, 1947 to March 17, 1965
W. R. Fawcett	May 13, 1952 to November 27, 1953
Luther C. Anderson	January 12, 1954 to February 11, 1975
Noah Dietrich	November 8, 1955 to November 23, 1970
Ferdinand Mendenhall	July 29, 1958 to October 8, 1974
Ben P. Griffith	August 9, 1960 to June 7, 1961
Pietro Di Carlo	February 14, 1961 to November 7, 1967
William S. Peterson	February 14, 1961 to August 10, 1979
Aubrey E. Austin Jr.	February 28, 1961 to May 13, 1975

Albert F. Bush.....	November 14, 1961 to February 11, 1975
John W. Luhring	January 16, 1962 to August 8, 1967
Joseph M. Quinn	May 14, 1968 to September 18, 1973
B. Walter Hicks.....	May 8, 1973 to August 20, 1974
Samuel B. Nelson	September 18, 1973 to October 9, 1984
Katherine B. Dunlap	August 20, 1974 to September 11, 1984
Jerry Godell.....	October 8, 1974 to October 9, 1984
Edward L. Kussman.....	October 8, 1974 to November 8, 1993
Herman Leavitt	February 11, 1975 to August 19, 1975
Yolanda M. Nava	February 11, 1975 to September 14, 1976
S. Dell Scott	February 11, 1975 to October 12, 1993
Willie J. Stennis	May 13, 1975 to December 31, 1978
Mladin Zarubica.....	August 19, 1975 to March 16, 1981
Soledad S. Garcia.....	September 14, 1976 to September 11, 1984
Mark Lainer	November 13, 1979 to February 12, 1991
Mark Nathanson.....	April 14, 1981 to September 11, 1984
Michael Glazer.....	September 11, 1984 to April 9, 1991
Helen Romero Shaw	September 11, 1984 to November 8, 1993
Marilyn L. Garcia.....	October 9, 1984 to February 9, 1993
Rachel Levin	October 9, 1984 to April 4, 1989
Frank S. Wyle	October 9, 1984 to August 1, 1991
Robert Abernethy.....	April 4, 1989 to October 13, 1992
	February 9, 1993 to November 8, 1993
Vernon R. Watkins.....	February 12, 1991 to August 20, 1992
Alf W. Brandt	April 9, 1991 to February 13, 1996
Michael J. Gage	August 1, 1991 to September 21, 1993
Carolyn L. Green	August 20, 1992 to December 31, 1995
	April 30, 1996 to May 16, 1997
William G. Luddy	October 13, 1992 to May 10, 2005
George Wein	October 12, 1992 to August 20, 2002
David Y. Handelman	November 8, 1993 to November 14, 1995
Kenneth T. Lombard.....	November 8, 1993 to April 11, 1995
Katherine W. Moret	November 8, 1993 to December 31, 2000
Christopher C. Pak.....	November 8, 1993 to December 19, 1995
Bonny L. Herman.....	April 11, 1995 to April 12, 2004
Larry J. Kosmont	February 13, 1996 to December 31, 2000
Aaron E. Michaelsen.....	February 13, 1996 to January 13, 1997
L. Michael Russell	June 11, 1996 to January 12, 1998

S. David FreemanJanuary 12, 1998 to December 31, 2000
 Ronald R. GastelumJanuary 12, 1998 to November 10, 1998
 Jorge G. CastroJune 7, 1999 to October 7, 2003
 Deborah DentlerAugust 20, 2002 to January 6, 2006
 David FarrarOctober 7, 2003 to January 6, 2006
 Robert B. SimondsApril 12, 2004 to January 6, 2006
 Ronald F. Deaton.....May 10, 2005 to January 6, 2006
 AARON A. GRUNFELD.....January 6, 2006 to
 JOHN W. MURRAY JR.January 6, 2006 to
 JESÚS E. QUIÑONEZ.....January 6, 2006 to
 Nancy SutleyJanuary 6, 2006 to May 12, 2009
 DAVID W. FLEMING.....May 12, 2009 to

MUNICIPAL WATER DISTRICT OF ORANGE COUNTY

Glenn P. AllenDecember 11, 1951 to December 17, 1986
 W. B. HellisAugust 19, 1955 to February 9, 1975
 William J. Teague.....February 11, 1969 to October 10, 1972
 Robert R. DowlingSeptember 14, 1971 to May 11, 1976
 Doyle MillerOctober 10, 1972 to October 31, 1987
 Carl J. Kymla.....October 9, 1973 to October 20, 1993
 Philip J. ReillyDecember 9, 1975 to December 8, 1978
 Gerald E. PriceMay 11, 1976 to December 31, 1988
 M. Roy Knauft Jr.....September 13, 1977 to January 12, 1993
 Kenneth H. WittOctober 13, 1981 to December 31, 2000
 William F. Davenport.....January 13, 1987 to February 14, 1995
 JOHN V. FOLEYAugust 22, 1989 to
 Wesley M. BannisterJanuary 12, 1993 to October 31, 2006
 Jerry A. KingJanuary 11, 1994 to July 21, 1999
 Robert J. Huntley.....February 14, 1995 to October 31, 1999
 Peer A. SwanAugust 31, 1999 to June 30, 2002
 Ed Royce Sr.....February 7, 2000 to December 31, 2000
 Langdon W. Owen.....January 17, 2001 to April 24, 2003
 ERGUN BAKALLJuly 1, 2002 to
 LARRY D. DICK.....August 12, 2003 to
 Steve Anderson.....January 30, 2007 to January 16, 2008
 LINDA ACKERMAN.....April 8, 2008 to

PASADENA

Franklin Thomas March 1, 1929 to August 27, 1952
Morris S. Jones September 16, 1952 to October 10, 1961
Robert B. Diemer January 16, 1962 to October 27, 1966
Don C. McMillan January 10, 1967 to October 26, 1975
Karl A. Johnson December 9, 1975 to April 11, 1980
Martin Goldsmith July 8, 1980 to June 11, 1985
TIMOTHY F. BRICK June 11, 1985 to

SAN DIEGO COUNTY WATER AUTHORITY

Fred A. Heilbron January 10, 1947 to February 14, 1973
J. L. Burkholder January 24, 1947 to April 6, 1953
Richard S. Holmgren August 11, 1953 to February 19, 1963
J. William Fisher April 12, 1955 to October 11, 1955
Hans H. Doe August 20, 1959 to October 20, 1986
Paul Beermann February 19, 1963 to July 9, 1963
Harry Griffen February 19, 1963 to October 13, 1997
George R. Henderson August 13, 1963 to November 29, 1964
Ralph E. Graham September 14, 1971 to January 14, 1975
August 17, 1979 to June 28, 1982
Raymond E. Badger September 18, 1973 to May 14, 1979
Lloyd L. Lee November 20, 1973 to December 31, 1980
John M. Cranston January 14, 1975 to December 31, 1986
John P. Starkey January 13, 1981 to March 12, 1992
Michael D. Madigan August 18, 1982 to October 13, 1992
Francesca M. Krauel November 8, 1983 to August 20, 2001
John F. Hennigar November 18, 1986 to October 31, 1989
Dale Mason January 13, 1987 to February 8, 1999
Herbert H. Stickney November 14, 1989 to April 13, 1993
Christine M. Frahm April 14, 1992 to March 12, 1999
John M. Leach October 13, 1992 to October 25, 1993
Joseph Parker April 13, 1993 to January 11, 1999
June 7, 1999 to February 10, 2009
Mark W. Watton December 13, 1993 to January 12, 1998
February 8, 1999 to May 14, 2001
Gordon W. Tinker October 12, 1997 to December 31, 2000
Claude A. "Bud" Lewis January 12, 1998 to December 7, 2006

James F. TurnerJanuary 11, 1999 to December 31, 2000
February 10, 2003 to August 17, 2004
Harold W. BallMay 14, 2001 to February 10, 2003
George I. Loveland.....October 15, 2001 to November 1, 2006
W.D. “BUD” POCKLINGTON ...August 17, 2004 to
James H. “Jim” BondNovember 1, 2006 to February 10, 2009
JAMES M. BARRETT.....December 7, 2006 to
KEITH LEWINGERFebruary 10, 2009 to
FERN STEINERFebruary 10, 2009 to

SAN FERNANDO

Neville R. Lewis.....December 14, 1971 to August 21, 1984
Pat J. Modugno.....August 21, 1984 to August 8, 1986
Doude WysbeekDecember 9, 1986 to June 10, 1997
Sergio Rascon.....June 10, 1997 to July 7, 2000
Hugo C. MejiaJuly 7, 2000 to November 8, 2004
Steven Veres.....November 8, 2004 to September 5, 2007
SYLVIA BALLIN.....September 5, 2007 to

SAN MARINO

Harry L. Heffner.....March 1, 1929 to September 29, 1933
John H. RambozSeptember 29, 1933 to November 18, 1960
Howard A. MillerJanuary 10, 1961 to April 26, 1975
Preston Hotchkis.....June 10, 1975 to September 10, 1986
Preston B. HotchkisMarch 10, 1987 to March 13, 1990
JOHN T. MORRISMarch 13, 1990 to

SANTA ANA

S.H. Finley.....March 1, 1929 to April 10, 1942
A. H. AllenApril 10, 1942 to December 10, 1968
Howard W. Crooke.....December 10, 1968 to September 1, 1977
John Garthe.....November 8, 1977 to July 9, 1991
Daniel H. Young.....July 9, 1991 to December 31, 1993
Lee Harry.....February 8, 1994 to April 8, 1997
Thom Coughran.....April 8, 1997 to February 3, 2005
DANIEL E. GRISET.....February 3, 2005 to

SANTA MONICA

George H. Hutton..... March 1, 1929 to January 16, 1931
Arthur A. Weber January 16, 1931 to October 12, 1934
William H. Carter February 15, 1935 to March 13, 1936
Edmond S. Gillette..... June 12, 1936 to January 8, 1937
Arthur P. Creel..... January 8, 1937 to March 3, 1941
Samuel G. McClure March 21, 1941 to November 14, 1947
Samuel J. Crawford..... December 5, 1947 to September 15, 1959
Mark T. Gates January 12, 1960 to July 12, 1972
Francis A. Goplen August 18, 1972 to December 9, 1980
Robert Gottlieb December 9, 1980 to December 8, 1987
Christine E. Reed March 8, 1988 to April 24, 1996
JUDY ABDO June 11, 1996 to

THREE VALLEYS MUNICIPAL WATER DISTRICT

Hugh W. Stiles December 8, 1950 to December 31, 1961
Arthur H. Cox January 16, 1962 to April 16, 1974
William C. Leech April 16, 1974 to February 9, 1982
William H. Koch..... February 9, 1982 to February 12, 1985
Mel Harper..... February 12, 1985 to February 18, 1986
Richard W. Hansen June 10, 1986 to August 20, 1991
Bruce R. J. Milne August 20, 1991 to February 10, 1997
Henry S. Barbosa February 10, 1997 to February 20, 2002
DAVID D. DE JESUS March 8, 2002 to

TORRANCE

John Dennis..... March 17, 1931 to April 14, 1933
J. R. Jensen..... April 14, 1933 to December 31, 1933
Charles T. Rippy January 19, 1934 to August 8, 1950
George W. Stevens..... September 22, 1950 to June 13, 1961
George A. Bradford June 13, 1961 to October 13, 1964
George Vico..... November 17, 1964 to August 13, 1968
Ben Haggott August 13, 1968 to November 14, 1982
Marvin Brewer March 8, 1983 to November 27, 1993
BILL D. WRIGHT..... March 8, 1994 to

UPPER SAN GABRIEL VALLEY MUNICIPAL WATER DISTRICT

J. Ercel Cleminson.....April 9, 1963 to January 30, 1964
Howard H. HawkinsApril 9, 1963 to December 31, 1989
February 9, 1993 to March 4, 1997
Frank E. Vachon.....March 10, 1964 to March 10, 1970
Robert T. Radford.....March 10, 1970 to December 31, 1970
Travis L. ManningJanuary 12, 1971 to December 31, 1978
Burton E. Jones.....January 9, 1979 to February 9, 1993
John E. MauldingJanuary 9, 1990 to February 9, 1993
Anthony R. FellowFebruary 9, 1993 to February 10, 2009
Frank F. Forbes.....March 4, 1997 to December 31, 2000
R. WILLIAM "BILL" ROBINSON..February 10, 2009 to

WEST BASIN MUNICIPAL WATER DISTRICT

Robert E. AustinAugust 20, 1948 to October 21, 1968
Ben Haggott.....March 10, 1953 to October 8, 1956
W. C. FarquharAugust 19, 1955 to July 13, 1976
T. V. TallonAugust 9, 1960 to April 9, 1963
Louis J. Alexander.....August 13, 1963 to March 30, 1972
Charles D. BarkerSeptember 10, 1963 to December 31, 2000
Einar C. Matson.....November 12, 1968 to February 12, 1984
Lester E. CarlsonOctober 8, 1974 to September 2, 1988
E. L. BalmerAugust 19, 1976 to May 23, 1989
Harold E. CrozierOctober 25, 1988 to April 9, 1991
Charles L. Stuart.....July 11, 1989 to April 11, 1995
Robert GoldsworthyApril 9, 1991 to March 8, 1994
EDWARD C. LITTLEMarch 8, 1994 to January 12, 1998
January 5, 1999 to September 5, 2001
April 9, 2007 to
Bondie O. Gambrell.....April 11, 1995 to February 10, 1997
Mark S. DymallyFebruary 10, 1997 to January 5, 1999
Carol W. Kwan.....January 12, 1998 to January 5, 1999
September 5, 2001 to April 9, 2007
Willard H. Murray Jr.January 5, 1999 to April 13, 2009
GLORIA GRAY.....April 13, 2009 to

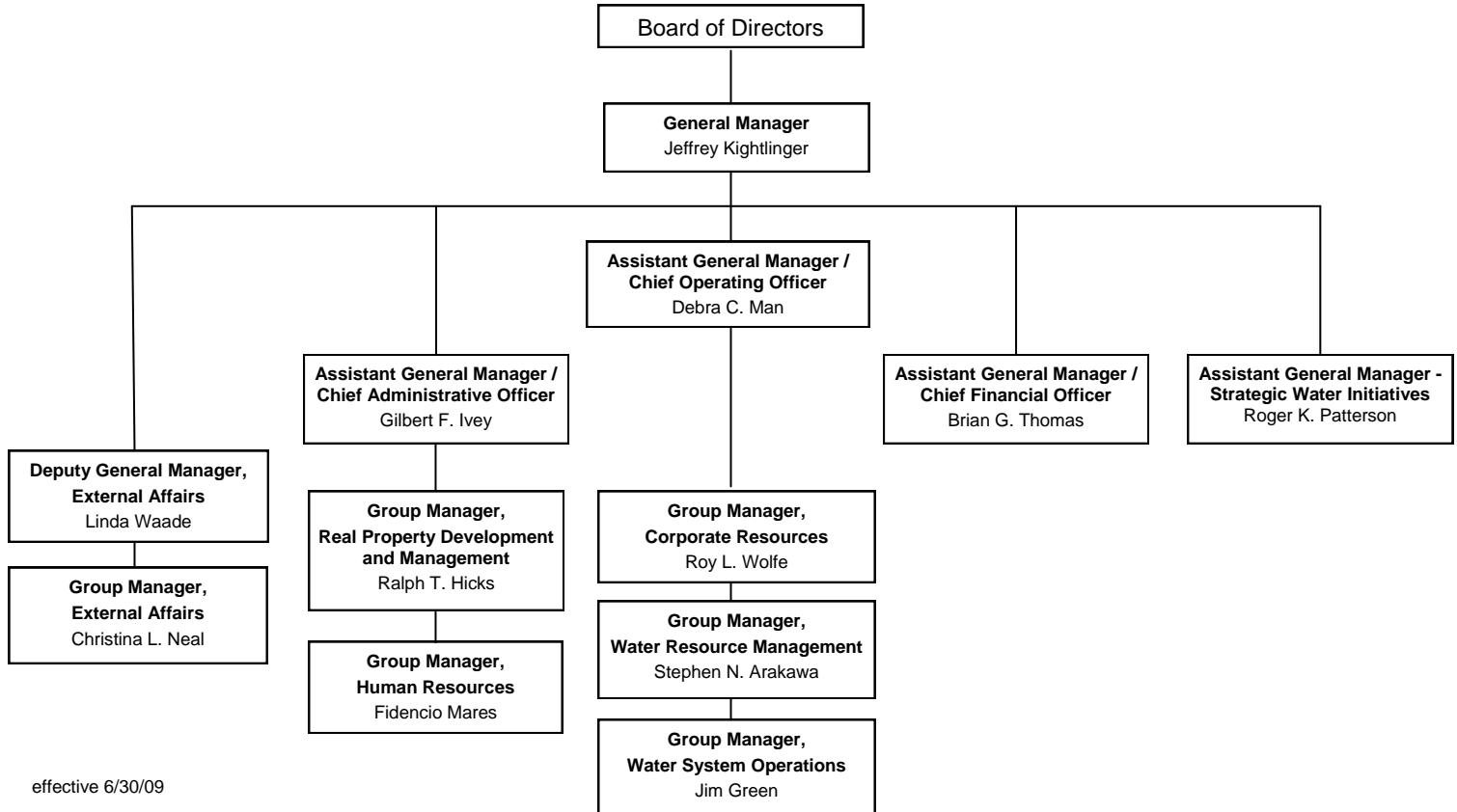
WESTERN MUNICIPAL WATER DISTRICT OF RIVERSIDE COUNTY

Howard Boylan December 14, 1954 to July 13, 1976
Lois B. Krieger August 19, 1976 to December 31, 2000
John M. Mylne III October 12, 1993 to January 7, 2008
S.R. "Al" LOPEZ January 7, 2008 to

Notes:

Current Directors' names are shown in capital letters.

A 2001 reorganization reduced the number of directors on the board from 51 to 37.



effective 6/30/09

Figure 2

STAFF
June 30, 2009

EXECUTIVE MANAGEMENT

General Manager..... J. Kightlinger
General Counsel..... K. L. Tachiki
General Auditor..... G.C. Riss
Ethics Officer D. Elliott
Assistant General Manager/Chief Operating Officer D. Man
Assistant General Manager/Chief Administrative Officer G.F. Ivey
Assistant General Manager/Chief Financial Officer B.G. Thomas
Assistant General Manager/Strategic Water Initiatives..... R.K. Patterson
Deputy General Manager L. Waade

AUDIT

Assistant General Auditor L.M. Gagliano

CHIEF ADMINISTRATIVE OFFICER

Manager, Business Outreach Section..... J. Arena

CHIEF FINANCIAL OFFICER

Manager, Treasury Debt Management Section K.R. Norris
Controller T. DeBacker
Manager, Budget & Financial Planning D. Upadhyay

CORPORATE RESOURCES

Group Manager R. Wolfe
Assistant Group Manager/Chief Engineer..... G. Johnson
Manager, Engineering Services Section..... W. Lieu
Manager, Information Technology Section..... D. Edwards
Manager, Business Services Section A. Kokuga
Manager, Project Coordination Office T. Tellers

EXTERNAL AFFAIRS

Group Manager C.L. Neal
State Legislative Representative K. Cole
Federal Legislative Representative B. Hiltcher
Manager, Media Services Section..... A. Acuña
Manager, Legislative Services Section D. Zinke
Manager, Customer & Community Services Section..... Y.L. Martinez

STAFF
June 30, 2009

HUMAN RESOURCES

Group ManagerF. Mares
Manager, Employee Relations Section S. Lem
Manager, Total Compensation SectionD. Pitman

LEGAL

Assistant General CounselS.B. Bennion
Assistant General CounselM. L. Scully

REAL PROPERTY DEVELOPMENT & MANAGEMENT

Group ManagerR.T. Hicks
Assistant Group Manager.....J.T. Wicke

WATER RESOURCE MANAGEMENT

Group ManagerS.N. Arakawa
Manager, Resource Implementation Section..... A. Sienkiewich
Manager, Resource Planning & Development Section G.L. Chan

WATER SYSTEM OPERATIONS

Group ManagerJ.F. Green
Assistant Group Manager.....S.O. Chapman
Manager, Operations & Planning Section.....M. Morel
Manager, Water Quality Section M.H. Stewart
Manager, Operations Support Services SectionL.L. Shraibati
Manager, Conveyance & Distribution Section..... W. Peci
Manager, Water Treatment Section.....B.M. Coffey

